

## MCNumera

Monitoring main material consumption

The MCNumera is developed to measure the consumption of the main material.

The MCNumera can be fitted with many different types of hopper loaders. On the top plate of the MCNumera, an adapter plate can be mounted to fit loaders with an outlet diameter up to 280 mm. The different tube holders make it possible to connect any kind of material tube.

Indication lights on four sides of the MCNumera make it possible to easily check the status of the machine from 360 degrees around. \*

The modularity of the Movacolor system makes it easy to integrate the MCNumera in existing setups of Movacolor. Together with the Movacolor Touch Controller the main material consumption can be monitored.

\*not available for high temperature version

### Features

- Stainless steel
- Easy to clean
- Different loader types can be mounted
- Direct connection for the material tubes, less chance of errors occurring
- Easy to install on Movacolor products
- High precision weight monitoring (+/- 1%)



### Easy to install

The MCNumera is easy to install on Movacolor products and many different loader types can be mounted.



### Quality control

Two load cells constantly measure the weight and determine the main material consumption, this process can be monitored with the Movacolor touch screen controller (MCTC) and MCSmart.



### Optional

- Different tube holders
- Custom made adapters for Movacolor and non-Movacolor hopper loaders
- High temperature version



## MOVACOLOR LEADING INNOVATOR IN DOSING TECHNOLOGY

For almost three decades, Movacolor has been dedicated to coloring the world in a sustainable way. We do so by developing high-precision gravimetric and volumetric dosing systems. Our knowledge, experience and innovation capabilities are invested in a comprehensive portfolio of user-friendly products. These work easily and effortlessly together in advanced systems that conserve additives, increase production flexibility and deliver excellent results.

## MCNumera

### Technical specifications

#### TEMPERATURE RANGE PROCESSED MATERIAL

Standard version: 120 degrees

High temperature version: 180 degrees

#### CAPACITY

Determined by the loader. Maximum capacity  
75 kg (material included)

#### APPLICATIONS

Injection molding and extrusion

#### COMMUNICATION

Modbus TCP/IP, Profibus\*, Profinet\*

#### DATA STORAGE

Internal memory (static changes), MCSmart data  
logging software (dynamic changes)

#### POWER SUPPLY

95-250 VAC, 50/60 Hz. By integrated automatic  
voltage selector

#### POWER CONSUMPTION

150 Watt maximum

#### LANGUAGES

English, German, Dutch, French, Hebrew, Turkish,  
Chinese simplified, Chinese traditional, Thai, Japanese,  
Russian, Italian, Czech, Portuguese, Spanish,  
Indonesian, Polish, Korean, Hungarian, Swedish,  
Romanian, Slovenian, Croatian, Serbian.\*\*

#### OPERATION

8" full color touch screen display

#### INPUT SIGNALS

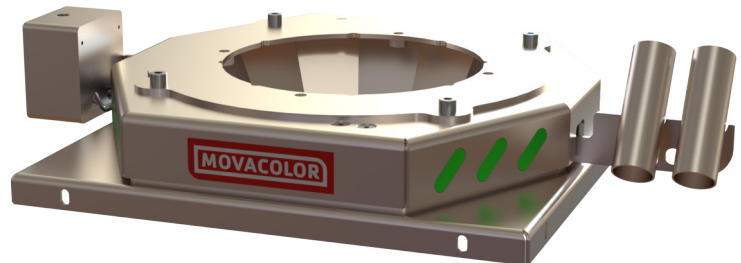
Start input: potential free, 24 VDC or extruder  
tacho (0-30 VDC)

#### OUTPUT SIGNALS

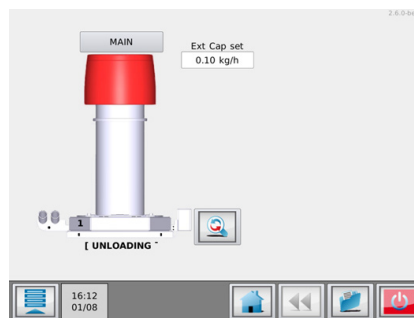
Alarm, warning, run

\* optional

\*\* additional languages on request



### Easy to monitor



### Dimensions MCNumera

