



MCHigh Output

Accurate dosing of high capacities

The MCHigh Output is the gravimetric answer for dosing high capacities from 50 kg/h up to a maximum of 1,200 kg/h. The system doses this high output of additive without making any concessions to accuracy. The gravimetric technology makes this possible for both injection molding and extrusion applications.

The unit has an integrated weighing module that precisely measures the throughput by the loss-in-weight principle.

The fully gravimetric system continually calibrates the dosage and adjusts automatically. The refilling of the MCHigh Output is controlled by an integrated pneumatic operated knife valve at the top flange.

The MCHigh Output handles granulates, difficult regrinds and free-flowing powders. It is capable of processing hot materials up to 180°C.



Features

- Full gravimetric control
- Easy to clean: the motor/screw assembly can be removed without tools
- Can handle granulates, difficult regrinds and free-flowing powders
- Equipped with an integrated slide valve to control the material loading
- Can handle hot materials up to 180°C



Wide capacity range

The MCHigh Output comes in three sizes, max. 100, max. 500 and max. 1,200 kg/h.



Multi material dosing

Specially designed to handle the most difficult materials including bad flowing powders and large regrinds.



Easy integration

The MCHigh Output can easily work in conjunction with other Movacolor dosing units. This allows more flexibility in handling different materials or outputs at the production line.

MOVACOLOR LEADING INNOVATOR IN DOSING TECHNOLOGY

For almost three decades, Movacolor has been dedicated to coloring the world in a sustainable way. We do so by developing high-precision gravimetric and volumetric dosing systems. Our knowledge, experience and innovation capabilities are invested in a comprehensive portfolio of user-friendly products. These work easily and effortlessly together in advanced systems that conserve additives, increase production flexibility and deliver excellent results.

MCHigh Output

Technical specifications

CAPACITY

- HO100 15-100 kg/h*
- HO500 25-500 kg/h*
- HO1200 50-1,200 kg/h*

APPLICATIONS

Injection molding and extrusion

COMMUNICATION

Modbus TCP/IP, Profibus**, Profinet**

DATA STORAGE

Internal memory (static changes), MCSmart data logging software (dynamic changes), 1,000 recipes storage function

POWER SUPPLY

95-250 VAC, 50/60 Hz. By integrated automatic voltage selector

POWER CONSUMPTION

150 Watt maximum

LANGUAGES

English, German, Dutch, French, Hebrew, Turkish, Chinese, Thai, Japanese, Russian, Italian, Czech, Portuguese, Spanish, Indonesian, Polish, Korean, Hungarian, Swedish, Romanian***

OPERATION

8" full color touch screen display

INPUT SIGNALS

Start input: potential free 24 VDC or extruder tacho (0-30 VDC)

OUTPUT SIGNALS

Alarm, warning, run, 2x010 VDC** or 4-20 mA**

EXTERNAL COMMUNICATION

Standard PC link using TCP/IP or Modbus-TCP protocol

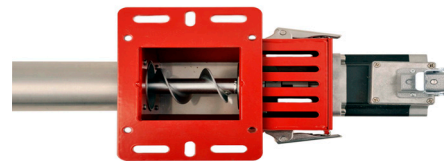
* measured with a bulk density of 0.8 kg/dm³

** optional

*** additional languages on request

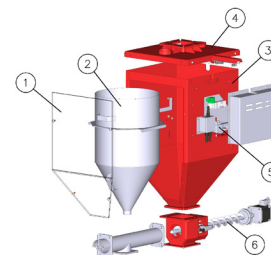


Screw assembly and auger



Exploded view

- 1 Window
- 2 Weighing hopper
- 3 Body
- 4 Lid including knife gate
- 5 Load cells
- 6 Motor / screw assembly



Dimensions HO100, HO500 and HO1200

